

郡上  
GUJO

FREE  
¥0

Ski resort charm ★ Rediscovery!

## Contents

- 7 plans for actively enjoying ski resorts in summer.
- Satisfy your appetite & sense of adventure★Gujo City recommendations.
- Gujo City campgrounds, roadside rest areas, day hot springs, golf courses.
- Conquer it all! Gujo City ski resort catalog.

Ski resorts are fun even in summer♪

## Activity Wonderland Gujo



This pamphlet is double-sided.

郡上  
GUJO

FREE  
¥0

Ski resort charm ★ Rediscovery!

## Activity Wonderland Gujo

## Contents

- Conquer it all! Gujo City ski resort catalog.
- Gujo City campgrounds, roadside rest areas, day hot springs, golf courses.
- Satisfy your appetite & sense of adventure★Gujo City recommendations.
- 7 plans for actively enjoying ski resorts in summer.



This pamphlet is double-sided.



Affiliated Hotel



Hotel Villa Mont Saint

A hotel located on a quiet plateau adjacent to Yurien. Summer guests receive an admission ticket to Yurien. There is also a special early morning plan that allows you to stroll throughout Yurien.

☎0575-72-5518 📍3067-1 Takasucho Nishibora, Gujo City, Gifu Prefecture 🏠Western-style room - 1 night/2 meals, 2 people/room (tax included): Adult 9000 yen~, Elementary student 6300 yen~

Summer open period beginning of July → middle of August



The yellow lilies blooming and covering the side are an amazing sight! Be sure to check out the zone with lilies blooming in every color.

Dynaland Yurien (Dynaland)

Located at an altitude of 1000m and cooler than at the base. Unique gourmet foods, such as soft-serve ice cream made from lily roots, are for sale. You can also purchase locally-picked fresh vegetables and lily seedlings. Pets are welcome in the park.

☎0575-72-6636 📍3035-2 Takasucho Nishibora, Gujo City, Gifu Prefecture 🕒Weekdays 9:00-17:00, Weekends/Holidays/Obon 8:30-17:00 🚫None during open period 🎫Entrance fee: Adult 1030 yen, Child 400 yen 🚗10 minutes from the Tokai-Hokuriku Expressway Takasu IC 📄2000 spaces 🌐http://www.dynaland.co.jp/yuri

← Winter information on page 15



△Dynaland is located at the foot of Mt. Dainichi. If you are trekking up the hillside you can see the Northern Alps!

Flower Train

Look out at the elegant flowers from the open-air train windows on the 1.2km lily tour. You'll be comfortable without an umbrella even on rainy days ♪ (Departs every 30 minutes/capacity 54 people) ※Train design may differ from the picture.

[Rates] Adult/ one-way up 520 yen, one-way down 310 yen. Child/ one-way up 310 yen, one-way down 210 yen. (Children 3 and under are free.)

Beautiful!



and MORE...

Flower Lift

Ride the lift and enjoy the lilies from above. The cool air of the plateau feels great! The 60,000-wheel lily art "Yuri Art" in the 2000 m<sup>2</sup> wide space is a must-see.

※Children 3 and under must be carried in a baby carrier and pets must be in a cage or bag.



[Rates] 1 time: Adult 520 yen, Child 310 yen (Children 3 and under are free) ※ Ride up only

Kids Summerland

Kids will delight in the cool water of the large handcrafted pool set on the green slopes. In addition to a huge inflatable bounce house, fish-catching events are held on weekends, holidays and Obon. (Advance confirmation necessary)

[Rates] Free (Events may require separate fee)

3.6 million flower carpet. A trip to another world on the plateau!

First, you'll be surprised by the coolness! Separated from town at a high altitude, here in this other world you won't feel the extreme heat. Even in the mid-summer months of July and August, there are many days when the temperature does not rise above 30°C. The lilies that fill one side of the gentle slope are breathtaking! Visitors are inspired by carefully gazing at each and every flower as they would a star. Wander around the park, enjoy the flower train and lift, and find your own favorite picture spot.

Plan 02

Zipline Adventure

Take the lift to the top of the mountain and experience the 6 courses as you descend on this 2-hour tour. Enjoy flying together in a pair line or gliding above the flowers on the flower line. Feel at ease knowing that your guide will accompany you on the entire trip.

[Rates] Adult / Child 3800 yen ※ Includes Kokia Park admission, one-way lift fee and rental goods fee (gloves additional 100 yen ※ customers may bring own) [Age Requirements] Elementary students and older (Children may be accompanied by an adult) [Reservations] ☎0575-73-1205 or http://bsbs.sub.jp/zipline

As you walk, look for the gnome hidden in the forest!



Take the lift to the top! The kochia and flowers below are cute. ♡



Take a short stroll with your guide through the forest course.



Flying in a pair line is also fun!

Summer open period middle of April → middle of October

Hana no Eki Hirugano Kogen Kokia Park (Hirugano Kogen Ski Resort)

Located at an altitude of 800m on the Hirugano plateau, this park is about 5 minutes from the interchange and easily accessible. There are plenty of options, including a sky restaurant with a commanding view where you can enjoy the local Gujo foods, an authentic pizza shop that uses a stone oven, a crepe shop offering a variety of choices, and a food corner.

☎0575-73-2311 📍4670-75 Takasucho Hirugano, Gujo City, Gifu Prefecture 🕒8:30-17:00 🚫None during open period 🎫Entrance fee: Adult 500 yen, Child 300 yen 🚗5 minutes from the Tokai-Hokuriku Expressway Hirugano Kogen Smart IC 📄600 spaces 🌐http://hiruganokogen.com/summer

← Winter information on page 15



▲The annual kochia autumn foliage can be seen from the beginning to middle of October. Enjoy the round, fluffy shape!

and MORE...

Disc Golf

Players compete at throwing flying discs in place of a golf ball into a basket-type goal.

[Rates] 500 yen/person ※ Rental disc included [Age Requirements] None [Reservations] Not required

Strider Park

Use your feet to kick the ground and move forward on this American-born bike. Because there are no pedals or breaks, handling the bike is instinctive, which is great for your sense of balance!

[Rates] 30-minute rental pack: 500 yen ※ Strider board included in rental goods fee [Age Requirements] About 2-5 years old [Reservations] Not required

Free your heart and body. Glide down the slopes through the eyes of a bird!

Originally from France, the zipline is an activity that uses a wire rope and pulley to allow you to glide through the air. After the guide's full explanation and a little practice, you'll start the course and experience the beautiful sunshine filtering through the trees. Similar to bungee jumping, you'll begin on your own timing (3, 2, 1, go!). Although you may be nervous at first, you'll relax once you are flying ♪ The experience of gliding through the air might become a little addictive!

Plan 01



A witch?!

here are also courses that use small props such as brooms and deck brushes.



▲The line glides through the greenery with sunshine filtering through the trees. Feel like a bird!

Tree Climbing

Climb a tree with your own power using specialized safety equipment. Overlooking the forest from the unusual view above the trees, you will surely discover something new!

[Rates] Adult/Child 3000 yen ※ Includes Kokia Park admission, lift fee, rental goods fee and insurance fee (gloves additional 100 yen ※ customers may bring own) [Age Requirements] Elementary students and older [Reservations] ☎0575-73-1205 or http://bsbs.sub.jp/tree-climbing



Glass Workshop

Melt glass in the burner to make an original pendant. You can also try candle art and sand art.

[Rates] Pendant making 1500 yen. Painting 1500-2300 yen, etc. [Age Requirements] None [Reservations] Not required





Summer open period  
beginning of July  
↓  
end of September

※The Skate Park is open from the end of April.

## Takasu Fishing Park (Takasu Snow Park)

Enjoy spectacular fishing while overlooking the view of the city of Takasu beneath your eyes. Fishing and barbecue generally do not require reservations, therefore feel free to make an impromptu visit on the same day. There is also an outdoor shop selling curry and fast food.

☎0575-72-7000 📍3086-1 Takasue Nishibora, Gujo City, Gifu Prefecture ⌚8:00-17:00 (bait fishing/catching reception closes at 16:00) 🚫None during open period (temporary closures during heavy rain/lightning) 🆓Free admission 🚗10 minutes from the Tokai-Hokuriku Expressway Takasu IC 🅅Large parking lot available 🌐http://www.takasu.gr.jp/green

←Winter information on page 15

### Lure Fishing

Authentic fishing experience using pseudo-bait. Even if it's your first time, staff offer kind advice making this a great experience even for beginners. Equipment rental is also available so you can try even if you come empty-handed!

[Rates - example] 3-hour ticket 3000 yen (Women/Junior high student and under 2000 yen) ※Rod, reel, net, lure set additional 1500 yen [Age Requirements] None [Reservations] Not required

# Refreshing Plan 04 mountain wind! Magnificent views of the plateau. Easy and carefree fishing

A rare location where you can fish while admiring the view. The image of lure fishing is that it's difficult, and according to staff... "Yes, it's difficult!" More than bait fishing, lure fishing requires a game element in pulling in the lure (the pseudo-bait that simulates fish) and making it swim. You are bargaining with the fish. This difficulty makes it all the more impressive when you catch a fish. Beginners are given a great initiation and the delicious fish you catch are grilled for you at the barbecue area!

## and MORE...

### Bait Fishing

A fishing experience for beginners using bait such as salmon roe on a hook. Fishing with perfect timing once you have a bite, and not just catching the fish with bait, is a chance to show off your skills!

[Rates] Pole, bait, bucket, hooks rental set 500 yen ※Each fish caught: 600 yen (grilled or packed to take home) [Age Requirements] None [Reservations] Not required



It's easier than a lure!

▲This pond also has great scenery!

### Catching

Catch swimming fish with your hands in the small shallow pond! This is surprisingly difficult and even adults become engrossed in this activity! Your feet may get wet, so sandal rentals are available.

[Rates-example] 600 yen/1 fish (grilled or packed to take home) [Age Requirements] None [Reservations] Not required



▲A rainbow trout!

### Tebura (empty-handed) BBQ

A barbecue area adjacent to the fishing pond. Food, stove, plates and utensils are all available so you can feel free to use it at lunch. There's also a roof, so you will feel at ease on days with strong rain or sunshine.

[Rates] Basic charge for 1 table (screen, iron plate, charcoal set ※2 hours): 1500 yen, Barbecue food set (meat, vegetables, noodles, etc.) 1 serving: 1800 yen, Carry-in charge for 1 table/2 hours: 2000 yen (no charge when ordering more than 1 serving of food set)

▼Large amount of meat, seafood, vegetables, noodles, etc.! The image is 1 plate/2 servings



▲Tasting freshly-caught grilled fish is a luxury!



### Skate Park

Affiliated Facility

An indoor skate park with large and small skate ramps. Children and beginners can experience the park. Rental goods are available, so you can use the park even if you come empty-handed! The facility also features a trampoline, which kids love.

[Rates - example] ★Skate Park [1 hour] Adult 600 yen, Child 400 yen [2 hours] Adult 800 yen, Child 600 yen ★Trampoline [1 hour] 400 yen [Age Requirements] None [Reservations] Not required



## Nice View!



▲Slide down the 1000m-long slope!

▶Slide as close to the snow as possible.



◀Of course, skiing is also ok. Equipment to fully prepare you for falls!

## Ski & snowboard in summer Unrivalled summer slopes certified by Guinness!

How do we ski or snowboard if there's no snow? Don't worry. An artificial snow mat is set on top of the slope and provides the feeling of sliding on snow. According to staff, "If you can ski reasonably well in winter, then you'll have no problem. After a short lecture in our school, you'll be able to ski even if you have initial fears." The slope is filled with skiers and snowboarders honing their skills under the blue skies! Although the sliding sensation is no different from that on snow, rental skis and snowboards designated specifically for the summer slope are available.

### Hotel

#### Manten no Yado

All rooms in this 8-room hot spring inn have open-air baths. Dinner includes Hida beef, Okuminoko chicken and local organic vegetables.

☎0575-86-0777 📍1-1 Togeiyama Shirotoricho Itoshiro, Gujo City, Gifu Prefecture 🆓1 night/2 meals, 2 people/room (tax included): Adult 24940 yen-

#### Hotel Villa Wing

Casual hotel conveniently located just a 3-minute walk from the slope. Offers two types of rooms: a 6-tatami-mat sized room with a bunk bed and table, and an 8-tatami-mat sized Japanese-style room with attached bath and toilet.

☎0575-86-3168 📍1-1 Togeiyama Shirotoricho Itoshiro, Gujo City, Gifu Prefecture 🆓1 night/2 meals, 2 people/room (tax included): Adult 6200 yen-, Stay without meals 4200 yen-

### Affiliated Hot Spring



☎0575-86-3487 ⌚10:00-20:00 (Weekends/Golden Week/Obon: ~21:00), 12/23~3/20: until 21:30 🚫None 🆓Adult 800 yen, Child (3 years to elementary student) 400 yen

### Affiliated Hotel



### Mountain Bike

Take the gondola and lift to the summit and run down the course, an altitude difference of 480m. Everyone from beginners to experts will have fun. The picture shows the 1800m beginner "Off road experience course" that runs through the trees.

[Rates - example] Mountain bike / half helmet / protector rental set + gondola & lift ticket / [1 hour] Adult 3200 yen, Elementary student 2500 yen [2 hours] Adult 4700 yen, Elementary student 3500 yen [Age Requirements] None [Reservations] Required

### Gondola Sightseeing

Ride the gondola to the summit and take a 10-minute air walk. From the summit, you can see the Hakusan mountain range and the Northern Alps mountain range in the distance. Enjoy a stroll on the slopes while looking at the lovely alpine plants in summer.

[Rates] Adult: one-way 1000 yen/round-trip 1600 yen, Child: one-way 600 yen/round-trip 1000 yen

Summer  
7 plans for actively enjoying ski resorts in summer in Gujo

### Summer Slope

This slope was recognized as the longest summer slope in the 2011 "Guinness World Records" and is used by Japan's representative professional snowboarders and skiers. Polish your skills during summer!

[Rates] Lift ticket: Adult (over 19) 4700 yen, Junior/Senior high students/Seniors (over 50) 2600 yen, Elementary students 1000 yen, Preschoolers free, 4-hour ticket: 3500 yen ※All days are the same rate. Junior/senior high students and seniors must show identification. [Age Requirements] None [Rentals - example] ★Board, shoes, bindings, pole set/1 day: Beginner/Intermediate 4200 yen, Elementary student and under 2600 yen ★Boots/1 day: 2100 yen, Elementary student and under 1000 yen ★Helmet/600 yen



Winghills Snowboard School Director Oginuma

### Ski/Snowboard School

[Rate - example] Beginner-Lower level: 90 min/3600 yen, Intermediate-Advanced: 90 min/4200 yen [Reservations] ☎0575-86-3518 (8:30-16:00) 4 time slots per day: morning-2, noon-1, afternoon-1. Each time slot has a capacity of 6 people. Same-day registration at the Center House is available if there is space.

### Winghills

### Shirotori Resort

Located on the cool Shirotori plateau. In addition to the summer slope where professional athletes train, the country's tough fighters gather and hold their own mountain bike competition. You can see respected professional athletes from various circles. There is also a restaurant in the Center House.

☎0575-86-3518 📍1-1 Togeiyama Itoshiro Shirotoricho, Gujo City, Gifu Prefecture ⌚Slope lift 8:30-16:00 🚫None during open period 🆓Free admission 🚗30 minutes from the Tokai-Hokuriku Expressway Shirotori IC/Takasu IC 🅅1200 spaces 🌐http://winghills.net

←Winter information on page 15

## and MORE...

### Camp

You'll easily enjoy camping in the location surrounded by nature! In addition to the outdoor auto site, there is a survey-free indoor site in case of rain. Tent rentals are also available, so this is a great experience for beginners.

[Rates - example] ★Auto site: 1 night/1 tent 4200 yen, day trip 3100 yen ★Indoor site: 1 night/1 tent 9500 yen (includes tent, 4 sleeping bags, lantern) [Reservations] ☎0575-86-3518 (8:30-16:00)



### Tebura (empty-handed) BBQ

Convenient plan that includes a complete set of charcoal and stove. Have fun with friends and enjoy lunch between activities!

[Menu - example] Barbecue food set (beef, pork, chicken, hot dogs, grilled rice balls, vegetables, sauce, etc.) 1 serving: 1600 yen, Seafood barbecue set (fish, shrimp, scallops, squid, grilled rice balls, vegetables, sauce, etc.) 1 serving: 1800 yen ※orders must be for 2 or more people [Reservations] Required



# Plan 06

## Test your courage! Advance at a fearful 8m above ground. Invisible feet air athletics.

There are 13 obstacles on the course. Looking up from the bottom, it seems possible, but the moment you actually step out, you might scream at the swaying at your feet! However, although you might say, "It's impossible," the fact that you can't easily return is the real fear of this obstacle. Do you calmly progress forward or crawl with weak knees toward the goal? Either way, the most important thing is to enjoy the feeling of courage. Find your new self among the refreshing views at 8m above ground.

### ★ DG Wood Adventure Gujo

Course type obstacle 8m above the ground that people say feels the most fearful. Provocative gimmicks, such as logs that call into question your sense of balance and a climbing wall that requires physical strength, are waiting!

[Rates] Adult 2500 yen, Junior/Senior high student 2000 yen, Elementary student 1500 yen [Target Age] Elementary third grade and above [Reservations] Not required

### ★ [DG Wood Adventure Gujo] & [Giant Maze] set

[Rates] Adult 3000 yen, Junior/Senior high student 2300 yen, Elementary student 1700 yen, various special family tickets are also available.

Summer open period  
middle of April  
↓  
end of October

### Gujo Kogen Hotel (Gujo Kogen Ski Resort)

Located near the Gujo Kogen Ski Resort. At an altitude of 1050m, the beautiful location is surrounded by trees and cooler than at the base. The Wood Adventure and Giant Maze are both near the hotel.

☎0575-73-2206 ☎2363-395 Takasue Washimi, Gujo City, Gifu Prefecture ☎9:00-17:00 ☎Fridays (open holidays, summer vacation) ☎Depends on experience ☎5 minutes from the Tokai-Hokuriku Expressway Hirugano Kogen Smart IC ☎80 spaces ☎http://www.gujyokogen-hotel.com

← Winter information on page 14

### Hotel



#### Gujo Kogen Hotel

3 types of rooms are available, including Japanese-style, Western-style, and a combination of Western/Japanese-style. The large tubs in the open-air outdoor bath and indoor bath are surrounded by nature and may be used by day trip visitors (16:30-22:00 / Adult 1000 yen, Child 500 yen)

☎0575-73-2206 ☎2363-395 Takasue Washimi, Gujo City, Gifu Prefecture ☎1 night/2 meals, 2 people/room (tax included): Adult 9000 yen~

Check out the lodging information!

#### Giant Maze

Large wooden maze with a total area of 1200m<sup>2</sup> near Wood Adventure. Gather the Gujo Kogen Hotel mascot "Dejiro Family" stamps at 4 check points and reach the goal!

[Rates] Adult 800 yen, Junior/senior high student 600 yen, Elementary student 500 yen (Young children free/Must be accompanied by an adult) [Reservations] Not required



and MORE...



▲ Search for living creatures in the transparent mountain stream. The cold water is impressive!

Summer open period  
beginning of May  
↓  
end of October

※ "Family Summer Experience" is from the middle of July to the beginning of September

### Meiho Kogen Morikko Campground (Meiho Ski Resort)

The idyllic landscape is the campsite's main appeal. There are various activities that you can easily try, including many experiences that you might be interested in, but can't really do on your own. Even outdoor novices will feel reassured.

☎0575-87-2811 ☎3447-1 Mizore, Meiho Okuzumi Gujo City, Gifu Prefecture ☎Depends on the experience ☎None during the open period ☎Depends on the experience ☎30 minutes from the Tokai-Hokuriku Expressway Gujo Hachiman IC ☎1000 spaces ☎http://meihogreen.com

← Winter information on page 14

### Family Summer Experience

A great plan that includes play near the water and food experiences in one pack. The Meiho Kogen Nature Experience Center staff is available to give advice so you can feel comfortable having children participate. Choose from Plan A or Plan B.

[Target Age] 4 and above (Please consult for children 3 and under) [Reservations] ☎0575-87-0030 (up to 4 days before) ※1 day capacity: 20 people / insurance fee for non-participating companion 200 yen

#### Plan A

[Rates] -Weekdays: Adult 4300 yen, Child (4 years - elementary student) 3800 yen -Weekends/Holidays: Adult 4800 yen, Child 4300 yen [Details] Stone oven pizza making, amago catching & grilling, pizza/amago/local gourmet "kei-chan" chicken lunch, canoeing and observing living creatures in mountain stream (changes to craft experience when raining)

#### Plan B

[Rates] -Weekdays: Adult 4800 yen, Child 4300 yen -Weekends/Holidays: Adult 5300 yen, Child 4800 yen [Details] Canoeing, observing living creatures in mountain stream, lunch BBQ, amago catching, craft experience, tasting freshly grilled amago.



▲ Jumbo homemade pizza. The crispiness from the high temperature oven is irresistible!



▲ Catch the lively swimming amago with your own hands! They are quick, so it's fairly difficult...



▲ Eat the grilled amago that you caught! The local delicacy "Kei-chan" chicken is also delicious ♪

### Experience Menu (All activates may be experienced individually)

Nameplate making  
1200 yen/person

▶ Make a nameplate or doorplate using acorns and dried flowers!



Other: Taketombo Making 1000 yen, Canoeing 2000 yen, Morikko Slider 500 yen, Bamboo Kuchen Making 1500 yen  
A variety of experiences available.

### Camp

60 campground sites where you are surrounded by nature and can see the stars shining in the night sky. Tents, sleeping bags and other camping gear is available to rent (fee required) and support your outdoor experience.

[Rates] 1 site 2500 yen, admission fee 500 yen/person (under 4 years free) +5 site limited auto site is the same rate (power usage additional 1000 yen) -Check-in 13:00-17:00 / Check-out 11:00 next day -Early check-in (11:00-) 1 site + 1000 yen, Late check-out (-16:00) 700 yen/person -10:00-16:00 day camp admission fee 700 yen/person (under 4 years free) [Reservations] ☎0575-87-0030

and MORE...

### Tebura (empty-handed) BBQ

Food sets for enjoying a casual BBQ are available. [Hida beef set] 1 serving: 2800 yen, [Morikko set] 1 serving: 2200 yen, [Otegoro set] 1 serving: 1600 yen, [Children's set] 4 options available 1 serving: 1000 yen.

[Reservations] ☎0575-87-0030 (up to 3 days before)

### Hot spring 3 minutes by car



#### Meiho Onsen Yuseikan

Day hot spring facility located in the quiet mountains. In addition to the outdoor open-air bath where you can look up at the stars, there is utaseyu, jet bath, and large bath with bubbles. There is also a dining facility that serves local specialties, Meiho ham and Hida beef.

☎0575-87-2080 ☎3428-1 Meiho Okuzumi, Gujo City, Gifu Prefecture ☎10:00-21:00 (last entrance 20:30) ☎Wednesdays ※ During the ski season, the 3rd Wednesday is the only closure. Other Wednesdays are open 13:00-18:00 ☎Adult (Junior high student and over) 600 yen, Elementary student 300 yen

### Spa

7 plans for actively enjoying ski resorts in summer in Gujo

Summer

## Canoeing, nature observation, stone oven pizza making... Make family memories in Meiho's great outdoors!

# Plan 05



When heading out with family and friends, it can be difficult to find a plan that everyone will enjoy. In response to these needs, the "Family Summer Experience" is a complete set of the popular summer activities that you want to do at the ski resort. Lunch is included with activities such as canoeing or catching fish, and the rates are reasonable. You can take in the experiences on a day trip, but we recommend camping overnight to fully enjoy the nature surrounded by mountains. Make wonderful memories at night under the starry sky. There is also a hot spring nearby!





▲The realistic movements are sure to excite children.

**Enjoy**

**Dino Adventure Ride**

Adventure attraction with rides inside the "N.A.O. Akeno Kogen Campground" forest. Ride around in a cart and see the compelling and believable Tyrannosaurus and Triceratops!



☎0575-72-6758 ♫5434 Takasuchō Ayutate, Gujo City, Gifu Prefecture ☉10:00-16:00, Weekends/Holidays/Summer Vacation: 9:00-17:30 ♪Wednesdays, Winter ☑Adult 1300 yen, Junior high student and under 900 yen (Children under 2 are free ※May ride if carried in strapped baby carrier)※Overnight guests 300 yen discount ♫5 minutes from the Tokai-Hokuriku Expressway Takasu IC ♪300 spaces ※Open from end of April - end of October



▲Ride the cable car up to the entrance of the limestone cave.



▲One of the highlights in the cave, groups of stalactite, "Heaven".

**Enjoy**

**Otaki Limestone Cave**

This limestone cave has a total length of 2km. Currently, a 700m portion is open to the public. Enjoy foods that you can only find here, including somen noodles (summer only) made from the natural water that flows from the limestone cave.

☎0575-67-1331 ♫2298 Hachimancho Akuda, Gujo City, Gifu Prefecture ☉8:30-17:00 ♪None ☑Adult 1000 yen, Junior/Senior high student 800 yen, Elementary student 500 yen ♫15 minutes from the Tokai-Hokuriku Expressway Gujo Hachiman IC ♪300 spaces



◀ Alpacas Daiya and Bambi

▼The most beautiful time to view the flower meadows is during Golden Week.



**Enjoy**

**Bokka no Sato**

A guest ranch located on the Hirugano plateau at an altitude of 1000m. In addition to the vast, picturesque flower meadows and animal petting opportunities, the facility offers gourmet foods made from local milk and Hida beef, as well as craft experiences.

☎0575-73-2888 ♫2756-2 Takasuchō Washimi, Gujo City, Gifu Prefecture ☉10:00-17:00, Weekends/Holidays: 9:00-17:00 ※Changes may apply ♪Winter (end of November - middle of April) ※Some facilities are open on specific dates only during winter season ☑Adult 1130 yen, Junior/Senior high student 920 yen, 4 years-Elementary student 610 yen ♫5 minutes from the Tokai-Hokuriku Expressway Hirugano Kogen Smart IC ♪2000 spaces



▶Parfait making you want to try at least once 3500 yen~

▼Deco Sweets Making 1300 yen/2 items



**Create**

**Yamanonaka no Sanpuruya**

Try making vinyl resin food samples, one of Gujo's local industries. The samples look exactly like the real thing. Turn your sample into a magnet or strap for an additional 100 yen.

☎0575-82-2244 ♫693-2 Shirotoricho Mukaikodara, Gujo City, Gifu Prefecture ☉9:00-17:00 ♪Tuesdays ♫5 minutes from the Tokai-Hokuriku Expressway Shirotori IC ♪100 spaces (Seiryu no Sato Shirotori Roadside Rest Area)

▼Owners Daisuke and Maho Uemura



**Create**

**Takara Gallery Workroom**

Tradesman home studio where you can see the silk screen printing that originated in Gujo City where it is a local industry. The original washcloths are completed with a combination of rich patterns and colors. Tote bag printing is also popular.

☎050-3682-1861 (Reservations required) ♫470-28 Hachimancho Shimadani, Gujo City, Gifu Prefecture ☉10:00-17:00 ♪Wednesdays, 4th Tuesday of the month, and temporary closures ♫10 minutes from the Tokai-Hokuriku Expressway Gujo Hachiman IC ♪None (the closest parking lot is behind the old Government Kinenkan building)



◀ Process of putting ink on the block.

▶ Products that are collaborations with foreign artists are also for sale.



Satisfy your appetite & sense of adventure  
**Gujo City recommendations**  
Pick UP



▲Exciting Nagaragawa Rafting

**Activity**

**Adventure Rafting**

With an emphasis on experiences that affect the five senses, we plan and carry out rafting and shower climbing tours. Enjoy nature to your heart's content. There are also nap rooms available free of charge in the base.

☎0575-79-3405 ♫71-1 Minamicho Hakusan, Gujo City, Gifu Prefecture ☉8:00-19:00 ♪Not fixed ☑Nagaragawa Half Rafting 6500 yen, etc. ※Insurance fee additional 500 yen ♫3 minutes from the Tokai-Hokuriku Expressway Minami IC ♪30 spaces



▲Relax while shower rafting.

**Activity**

**ODSS (Outdoor Support System)**

This outdoor experience uses locations at spectacular view sites throughout the country. In Gujo City, "Hirugano Shower Rafting" allows you to have fun in the woods of Nagaragawa's headwaters and is a popular tour.

☎0575-79-9038 (Riverbase Nagaragawa) ♫Meeting place depends on experience ☉Depends on experience ♪Not fixed ☑Hirugano Shower Rafting 6500 yen, etc. ♫Depends on meeting place

▼The much-talked-about riding machine, Segway, moves forward using shifts in weight.



**Activity**

**Boken no Mori in Itoshiro**

Outdoor park that makes use of the neglected forest. There are two courses: the "Discovery Course" that allows you to enjoy activities in the forest, and the "Segway Course" that allows you to explore roads in the woods.

☎080-5306-4010 ♫56 Suigoutaniyama, Shirotoricho Itoshiro, Gujo City, Gifu Prefecture ☉Depends on experience ♪Not fixed ☑Forest Segway Tour 3240 yen, etc. (reservations required) ♫30 minutes from the Tokai-Hokuriku Expressway Shirotori IC ♪15 spaces

**Auto Site**

Even within the campsite, the location is particularly open and has a stepped plateau giving it excellent views. There are 15 sites with A/C (power), 22 sites without A/C, and 7 sites with A/C that allow pets.

[Rates] 1 site with A/C 4320 yen, 1 site w/o AC 3780 yen, 1 site with A/C that allows pets 5400 yen ※High season: add 1080 yen



When the sun sets, listen to the sounds of the people living in the forest.



Luxurious sleeping surrounded by nature. Temperatures fall at night, so please be careful.



Challenge yourself to bring a Dutch oven and cook something hearty!



Eating in nature doubles the deliciousness!

You can spend time in nature without many hesitations, therefore many guests bring children! Come and have fun!

and MORE...

**Main building**

The main building has a Center House with guest rooms available. Meals using Satoyama ingredients, such as seasonal vegetables and mountain vegetables, freshwater fish and pork. (Guests rooms are all Japanese-style).

[Rates - example] 1 night/2 meals, 2 people/room (tax included) Adult Weekdays 6480 yen~, Weekends/Holidays 7560 yen~



Summer open period  
**Year-round**

※Auto camp is from April to October

**Bungalow**

There are 39 bungalows of various sizes built within the trees. Each location is different with some in the shade and others in great locations. No matter which bungalow you select, they are all exciting!

[Rates - example] 1 building/4.5 tatami-mats 7560 yen, 1 building/6 tatami-mats 9720 yen, 1 building/6 tatami-mats (pets ok) 18,000 yen, etc. ※High season add 1080 yen



◀ Staff Sato, Iguchi



▲Good location in the trees. Look for the river play areas within the site.



▲The largest kitchen area has table seating, which makes cooking and eating comfortable.



**There's also a hot spring!**



**Motai Onsen**

The indoor and open-air baths in the basement of the Center House, while small and cozy, have a great view. The mildly alkaline simple thermal spring is said to warm up the body.

☉Camp users: 10:00-20:30, Main building overnight guests: check-in to checkout, Day users: 10:00-17:00 (weekends only) ♪Please confirm ☑Adult 540 yen, Child 324 yen

**Spa**

**Jumbo Baum Kuchen Making**

Try making a wild baum kuchen using bamboo! After mixing the ingredients, paint the batter onto the bamboo and bake, then repeat approximately 15 times. Once it's golden brown, it's sliced and ready to taste!

[Rates] 1300 yen/person (from 4 people) [Reservations] Required



Green!

Plan 07

The wind from the mountain is refreshing♪  
Here you're in the middle of the Motai mountains.  
Tranquil local campground

25 minutes from the Gifu Yamato Interchange. Among the numerous campgrounds in Gujo City, this has a laid-back feel that is appealing. It's located at the foot of the Motai Eboshiyama, which you'll see when you exit the country roads. Next to the winter ski resort's slopes is the auto site, which has trees that provide shade and plenty of private areas. The tranquility is the greatest charm. Feel free to ask our friendly staff members, Iguchi and Sato, anything.





▲Roof, tarp, outdoor all available!

◀Relaxing holidays on the hammock or at the fishing hole!

### BBQ Ork Park

An outdoor facility where you can enjoy barbecues and fishing in nature. Because the ingredients have already been prepared, you can barbecue even if you come empty-handed. On-site rental accommodations are available.

☎0575-73-2425 ♯2363-988 Takasucho Washimi Ueno, Gujo City, Gifu Prefecture ☉Day barbecue 10:00-18:00 ☉Day barbecue closed in winter ☑Tebura BBQ/BBQ Set - 1 serving: 2000yen-, other menus available ☎3 minutes from the Tokai-Hokuriku Expressway Hirugano Kogen Smart IC ☉25 spaces



◀Gujo Odori takes place over 32 nights from the middle of July to the beginning of September.



▲"Sogisui" is number 1 among the one hundred best springs.

### Sight Seeing

### Gujo Hachiman Central Area

Gujo Hachiman is famous for the Gujo Odori dance festival dating back over 400 years. The current castle town remnants still remain and the sound of water flows through the various waterways. Take a stroll and admire the architecture of the homes and town.

☎0575-67-0002 (Gujo Hachiman Tourism Association) ☎8 minutes from the Tokai-Hokuriku Expressway Gujo Hachiman IC ☉In addition to the old



Government Memorial Kinenkan parking lot, parking is available at several locations including public and private parking lots (fee required)

◀Yoshidagawa River, a symbol of Gujo Hachiman, is a children's play area.

### Drive Seseragi Kaido

A 72km road connecting Gujo Hachiman and Takayama. Enjoy the 700 meter altitude change along this exhilarating drive and see the green spring and beautiful autumn foliage. Along the drive there are promenades where you can park and take a walk.

☎0575-87-2844 (Meiho Tourism Association), ☎0577-68-2338 (Hida Kiyomi Tourism Association) ♯Meiho, Gujo City ~ Hida Kiyomi, Takayama City ☑No charge for passage



◀There are almost no signals, so you'll sail through! You'll want to drive with your windows open.



▶"Tori seijo" with dipping sauce made from local Gujo miso 980 yen

### Eat Soba no Hirajin

This long-established 70-year-old restaurant is always taking on new challenges. Because they want people to thoroughly enjoy the original taste of soba noodles as they chew them, through trial and error they've come up with a thick noodle with a chewy texture that you definitely must try.

☎0575-65-2004 ♯870 Hachimancho Honmachi, Gujo City, Gifu Prefecture ☉11:00-16:00, Weekends/Holidays 11:00-17:00 ※May change in summer ☉New Year's ☎3 minutes from the Tokai-Hokuriku Expressway Gujo Hachiman IC ☉7 spaces



◀Select rice balls "Onisuke Manpuku Set" 600 yen

### Eat Onisuke

Rice ball specialty store located in the Meiho Roadside Rest Area. The rice balls are made after you place your order. Tempura and side menu items are also freshly fried. Rice balls from 230 yen/each.

☎None ♯1015 Meiho Otani, Gujo City, Gifu Prefecture in the Meiho Roadside Rest Area Surusumi no Sato Park ☉11:00-16:00 ☉None ☎30 minutes from the Tokai-Hokuriku Expressway Gujo Hachiman IC ☉150 spaces (Meiho Roadside Rest Area)

▶"Plain Yogurt" 480 yen

▼Observe the factory through the glass.

▼"Caciocavallo" 800 yen~/each



### Shopping

### Takasu Farmers

From long ago, the Hirugano plateau has been cultivated as dairy land. Cheese, yogurt and other original products made from the fresh milk from cows raised in this area are produced and sold.

☎0575-73-1022 ♯4670-233 Takasucho Hirugano, Gujo City, Gifu Prefecture ☉8:00-17:00 ☉None ☎7 minutes from the Tokai-Hokuriku Expressway Hirugano Kogen Smart IC ☉30 spaces

### Eat

### Amidagatakiso

The somen noodles are cooled from the mountain spring water that flows in the stone made troughs. Taste the particular broth in which mountain wasabi is dissolved.

☎0575-85-2738 ♯1106-1-2 Kyoudana, Shirotoricho Maedani, Gujo City, Gifu Prefecture ☉10:00-17:00 (last order 16:30) ☉None during the open period (October is not fixed) ☑All-you-can-eat somen 600 yen ☎20 minutes from the Tokai-Hokuriku Expressway Shirotori IC ☉7 spaces ※Open until the middle of October



▲Flowing somen noodles are all-you-can-eat.



◀Popular "Kei-chan chicken set meal" 1080 yen

### Eat Takumi Yunohiraten

A local cafeteria in front of Yunohira Onsen (page 19) that offers items from noodles to set meals. The Gifu Prefecture specialty, "Cow Hormone Set Meal" 1280 yen, is a fulfilling and stamina-providing meal.

☎0575-72-5035 ♯1808-2 Takasucho Owashi, Gujo City, Gifu Prefecture ☉11:00-14:30, 17:00-21:00 ☉Thursdays ☎5 minutes from the Tokai-Hokuriku Expressway Takasu IC ☉50 spaces (Yunohira Onsen)



▶"Gujo Miso Ramen" using locally-made miso 650 yen

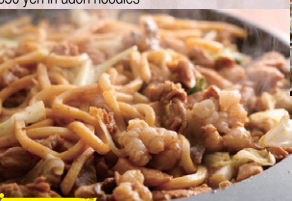
### Eat

### Takumi Kukkula Hirugano

Restaurant in the SA complex "Kukkula Hirugano." There are plenty of easy and convenient menu items including "Kei-chan chicken bowl" 900 yen and "Hida beef bibimbap bowl" 900 yen.

☎0575-73-3331 ♯5294-1 Takasucho Washimi, Gujo City, Gifu Prefecture ☉10:30-19:00 ☉Tuesdays ☎Close to the Tokai-Hokuriku Expressway Hirugano Kogen Smart IC ☉80 spaces (Kukkula Hirugano general roadside parking lot)

▼Hormone 800 yen + Kei-chan chicken 650 yen in udon noodles



▲Calm, raised tatami-floor seating area also available.

### Eat Daiwa Shokudo

Popular shop serving the local food, "Kei-chan" chicken. Unchanged for 40 years, the sauce is made from a blend of the shop owner's homemade miso and seasonings. Many regular local customers love the flavor.

☎0575-72-5656 ♯2413-1 Takasucho Owashi, Gujo City, Gifu Prefecture ☉11:00-13:30, 17:00-21:00 ☉Thursdays ☎3 minutes from the Tokai-Hokuriku Expressway Takasu IC ☉5 spaces



◀Limited quantities of today's sandwich.

▼Homemade bread and baked goods available while they last.



▲"Rokunori granola" made from the local Tanadama rice 150g/750 yen.

### Cafe

### kedī café

The husband and wife owners began the shop in 2011 so that people would get to know their hometown, Rokunori. In addition to coffee and bread, they offer mainly baked goods, as well as handmade trinkets.

☎090-5115-6276 ♯1781-1 Shirotoricho Rokunori, Gujo City, Gifu Prefecture ☉9:30-17:00, Winter from 11:00 ☉Fridays ☎15 minutes from the Tokai-Hokuriku Expressway Shirotori IC ☉6 spaces

### Take out

### Yukiyama Crepe

A crepe shop in a cute food cart located in the Meiho Roadside Rest Area. In addition to unique items featuring local delicacies such as the "Meiho ham avocado tomato cheese" crepe, there are also ice cream crepes in summer!

☎None ♯in the Surusumi no Sato Park 1015 Meiho Roadside Rest Area Meiho Otani, Gujo City, Gifu Prefecture ☉11:30-16:00, Weekends/Holidays 11:00-17:00 ☉Not fixed ☎30 minutes from the Tokai-Hokuriku Expressway Gujo Hachiman IC ☉150 spaces (Meiho Roadside Rest Area)



▲Food cart is the landmark. ◀"Chocolate Banana Strawberry" 550 yen

### Take out

### Meiho Gelato

Made from a base of Gujo's naturally delicious water and Takayama's Hida milk for a clean taste. In addition to seasonal products such as "Furusato Milk," there are 18 regular flavors of this homemade gelato.

☎0575-87-0138 ♯822 Meiho Otani, Gujo City, Gifu Prefecture ☉10:00-18:00 ☉Tuesdays ☎15 minutes from the Tokai-Hokuriku Expressway Gujo Hachiman IC ☉10 spaces



▲Small size (2 flavors): cup 420 yen, cone 450 yen

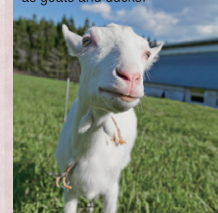


▲Comfortable sofas and tables in the store.



If the weather is nice, special seats make an appearance.

There are also animals such as goats and ducks!



▶Whole-wheat muffin 250 yen, Ice milk 500 yen



### Cafe Hirugano La Chaise

A café in a renovated barn located in a corner of the grass field. In addition to cheesecake and muffins made from fresh Hirugano Kogen milk, there is also a lunch set of pizza and pasta with salad and drink for 1200 yen.

☎090-7020-2750 ♯4672-256 Takasucho Hirugano, Gujo City, Gifu Prefecture ☉10:00-16:00 (lunchtime: 11:30-14:30) ☉Wednesdays, others not fixed ☎7 minutes from the Tokai-Hokuriku Expressway Hirugano Kogen Smart IC ☉10 spaces

### Cafe Kissa (café) Dan

A small café, run by a husband and wife, in a warm wooden room of a house. The unpretentious atmosphere feels like you are visiting an acquaintance's home. You feel that you might inadvertently stay a while.



▲The Japanese house has a working wood-burning stove.



▼Breakfast service includes drinks, as well as homemade gratin and toast. ☎0575-84-1418 ♯1088-1 Shirotoricho Rokunori, Gujo City, Gifu Prefecture ☉9:00-16:00 (Breakfast 9:00-11:00) ☉Thursdays and other temporary closures ☎15 minutes from the Tokai-Hokuriku Expressway Shirotori IC ☉5 spaces

### Cafe No Café

A sophisticated and cozy café with vintage furniture. The menu features soothing sweets made from fresh seasonal fruit. The husband's silver & leather works shop "Analog" is located next door.



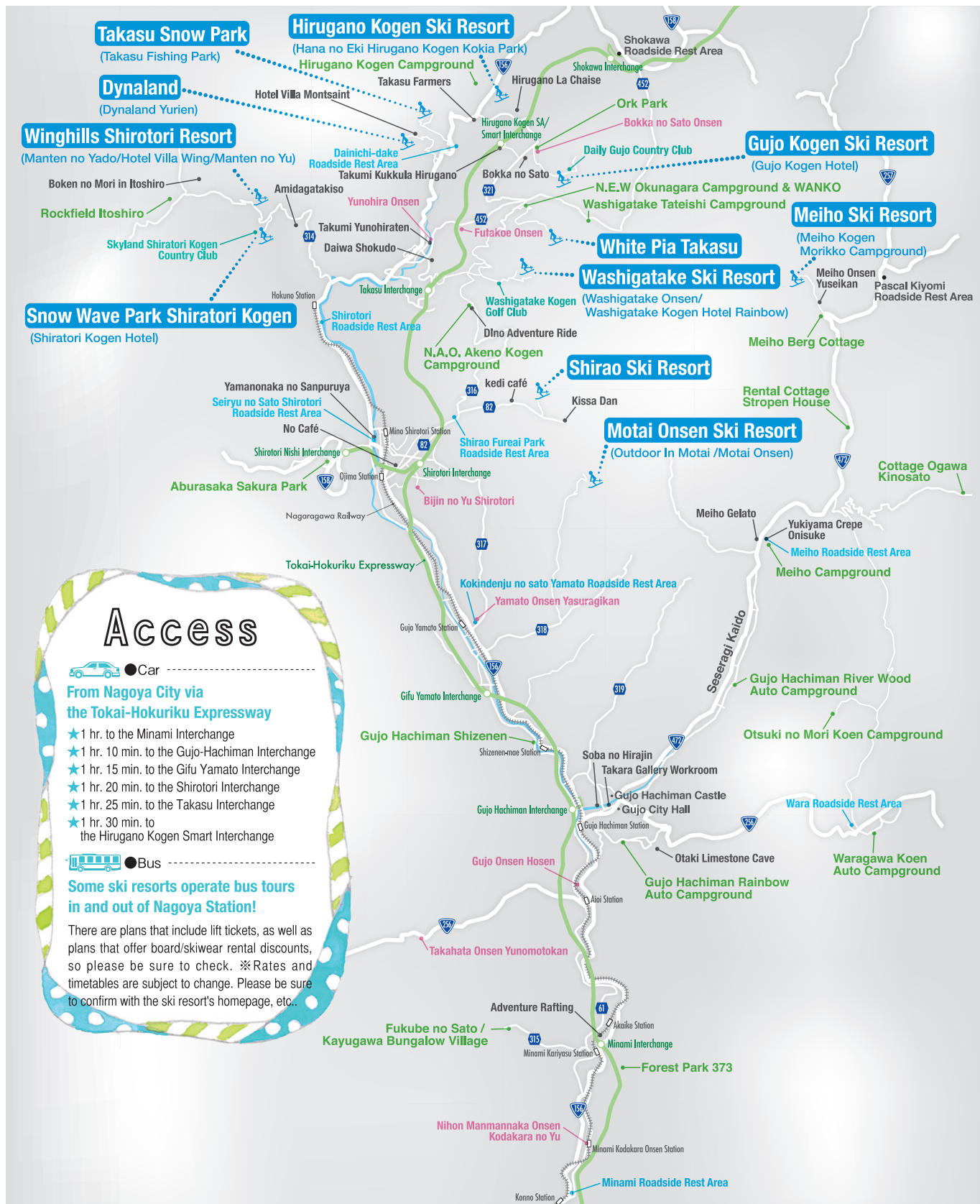
▲The ice cream is also homemade! Number 1 ranked "No Café Parfait" 853 yen

▼A house café located in an idyllic location.



☎0575-82-6468 ♯188-24 Shirotoricho Tamezani, Gujo City, Gifu Prefecture ☉11:00-17:00 (last order 16:30) ☉Monday-Wednesday ☎2 minutes from the Tokai-Hokuriku Expressway Shirotori IC ☉10 spaces





<Inquiries>  
**Gujo City 11 Ski Resorts Activation Council**

☎ +81+8069894257  
 📍 4670-75 Takasucho Hirugano, Gujo-shi(city), Gifu Prefecture 501-5301  
 ✉ gujoskikankou.miz@chubu-snow.com www.gujokankou.com

Shinya Mizumukai, Inbound Representative  
 ※Information printed in this pamphlet, particularly information with no notation, is valid as of 8/31/2016. Published information is subject to change. Please contact each facility for the latest information and details. ※Prices listed in this pamphlet include a basic consumption tax of 8%. Please note prices may vary depending on the facility and retailer.

**Campgrounds & Cottages, Roadside Rest Areas, Day Hot Springs, Golf Courses DATA in Gujo**

**Campgrounds & Cottages**

<b>Hirugano Kogen Campground</b> ☎ 0575-73-2331 📍 4714-2 Takasucho Hirugano, Gujo City	<b>Cottage Ogawa Kinosato</b> ☎ 0575-87-9920 (Ogawa Furusato Activation Association) 📍 346 Meiho Ogawa, Gujo City
<b>Washigatake Tateishi Campground</b> ☎ 0575-72-6167 📍 2362-143 Takasucho Washimi Washigatake, Gujo City	<b>Gujo Hachiman Shizenen</b> ☎ 0575-65-3766 📍 757 Hachimancho Shima, Gujo City
<b>N.A.O. Akeno Kogen Campground</b> ☎ 0575-72-6758 📍 5434 Takasucho Ayutate, Gujo City	<b>Gujo Hachiman Rainbow Auto Campground</b> ☎ 0575-67-0234 📍 388-1 Hachimancho Akuda, Gujo City
<b>N.E.W Okunagara Campground &amp; WANKO</b> ☎ 0575-72-6620 📍 1173 Takasucho Washimi, Gujo City	<b>Gujo Hachiman River Wood Auto Campground</b> ☎ 0575-62-3566 📍 2426 Hachimancho Ichishima, Gujo City
<b>Rockfield Itoshiro</b> ☎ 090-1740-4987 📍 80-1 Shimoorito, Shitoricho Itoshiro, Gujo City	<b>Waragawa Koen Auto Campground</b> ☎ 0575-77-3077 📍 192-1 Waracho Sawa, Gujo City
<b>Aburasaka Sakura Park</b> ☎ 0575-82-3505 📍 1253-438 Shitoricho Mukaikodara, Gujo City	<b>Otsuki no Mori Koen Campground</b> ☎ 0575-77-3288 📍 769-3 Waracho Kakura, Gujo City
<b>Meiho Campground</b> ☎ 0575-87-2535 📍 1023-1 Meiho Otani, Gujo City	<b>Fukube no Sato / Kayugawa Bungalow Village</b> ☎ 080-3643-1726 📍 Minamicho Takasago, Gujo City
<b>Meiho Berg Cottage</b> ☎ 0575-87-2816 📍 3435-6 Meiho Okuzumi, Gujo City	<b>Forest Park 373</b> ☎ 0575-79-3737 📍 998-2 Minamicho Hakusan, Gujo City
<b>Rental Cottage Stropen House</b> ☎ 080-1593-3411 📍 1962 Meiho Okuzumi, Gujo City	<b>Winghills Shiratori Resort Campground</b> ⇒Details on page 4 <b>Meiho Kogen Morikko Campground</b> ⇒Details on page 6 <b>Outdoor in Motai Campground</b> ⇒Details on page 8



**Roadside Rest Areas**

<b>Dainichi-dake Roadside Rest Area</b> ☎ 0575-72-5007 📍 3628-5 Takasucho Nishibora, Gujo City ☎9:00-17:00 🗓️Thursdays	<b>Meiho Roadside Rest Area</b> ☎ 0575-87-2395 📍 1015 Meiho Otani, Gujo City ☎8:00-18:00 (Weekdays from 9:00) 🗓️None
<b>Shiratori Roadside Rest Area</b> ☎ 0575-85-2747 📍 402-19 Shitoricho Nagataki, Gujo City ☎April-November: 7:00-18:00, December-March: 8:30-18:00 🗓️Tuesdays (next day when Tuesday is a holiday)	<b>Wara Roadside Rest Area</b> ☎ 0575-77-2353 📍 1155 Waracho Miyashiro, Gujo City ☎8:00-17:00 🗓️Tuesdays, year-end / New Year's Holiday
<b>Seiryu no Sato Shiratori Roadside Rest Area</b> ☎ 0575-82-3129 📍 693-2 Shitoricho Mukaikodara, Gujo City ☎8:30-18:00 🗓️Tuesdays	<b>Kokindenju no sato Yamato Roadside Rest Area</b> ☎ 0575-88-2525 📍 164 Yamatocho Tsurugi, Gujo City ☎9:00-18:00 🗓️Tuesdays (next day when Tuesday is a holiday), year-end / New Year's Holiday
<b>Shirao Fureai Park Roadside Rest Area</b> ☎ 0575-84-1188 📍 7-2 Shitoricho Onji, Gujo City ☎Summer: 7:30-18:00, Winter: 8:30-17:00 (café hours: 7:30-16:00) 🗓️Tuesdays	<b>Minami Roadside Rest Area</b> ☎ 0575-79-3886 📍 2605 Minamicho Kamita, Gujo City ☎9:00-18:00 (December-February until 17:30) 🗓️None



**Day Hot Springs**

<b>Futakoe Onsen</b> ☎ 0575-72-6011 📍 48-1 Takasucho Washimi, Gujo City ☎11:00-20:30 (last entrance 20:00) 🗓️Wednesdays (confirmation required) ☑️Adult 650 yen, Elementary student 400 yen	<b>Takahata Onsen Yunomotokan</b> ☎ 0575-63-2888 📍 5373 Hachimancho Nabi, Gujo City ☎Saturday 12:00-15:00, Sundays/Holidays: 9:00-15:00 ☑️Monday-Friday ☑️Adult 600 yen, 3 years~elementary student 300 yen
<b>Bokka no Sato Onsen</b> ☎ 0575-73-2088 📍 2363-231 Takasucho Washimi, Gujo City ☎11:00-21:00 (last entrance 20:00) 🗓️Thursdays ☑️Adult 820 yen, 4 years~elementary student 410 yen	<b>Gujo Onsen Hosen</b> ☎ 0575-63-2311 📍 Hotel Gujo Hachiman 208 Hachimancho Yoshino, Gujo City ☎10:00-24:00 ☑️None ☑️Adult 750 yen, 4 years~elementary student 400 yen
<b>Yamato Onsen Yasuragikan</b> ☎ 0575-88-9126 📍 189 Yamatocho Tsurugi, Gujo City ☎10:00-21:30 (last entrance 21:00) 🗓️Tuesdays (next day when Tuesday is a holiday) ☑️Adult 700 yen, 6-11 years 300 yen	<b>Nihon Manmannaka Onsen Kodakara no Yu</b> ☎ 0575-79-4126 📍 2709 Minamicho Ohara, Gujo City ☎10:00-21:00 (last entrance 20:30) 🗓️Tuesdays (next day when Tuesday is a holiday) ☑️Adult 600 yen, 6-11 years 300 yen
<b>Bijin no Yu Shiratori</b> ☎ 0575-83-0126 📍 32 Shitoricho Naru Yakhira, Gujo City ☎10:30-21:00, Winter: until 21:30 (last entrance 30 minutes before closing) 🗓️Thursdays (next day when Thursday is a holiday) ☑️Adult 750 yen, Child 300 yen	<b>Gujo Kogen Hotel (in Gujo Kogen Ski Resort)</b> ⇒Details on page 7 <b>Manten no Yu (in Winghills Shiratori)</b> ⇒Details on page 4 <b>Washigatake Onsen (in Washigatake Ski Resort)</b> ⇒Details on page 18 <b>Yunohira Onsen</b> ⇒Details on page 19 <b>Meiho Onsen Yuseikan</b> ⇒Details on page 6 <b>Motai Onsen (in Motai Onsen Ski Resort)</b> ⇒Details on page 8



**Golf Courses**

**Washigatake Kogen Golf Club**

Fantastic 18 holes overlooking the Hakusan mountain range. Located close to Washigatake Kogen Hotel Rainbow, which offers a restaurant and hot spring. Enjoy golfing in the resort-mode while enjoying the scenery.



☎ 0575-72-5101 📍 3262-1 Takasucho Owashi, Gujo City 🗓️None during open period ☑️Visitors: Weekdays 9800 yen~, Weekends/Holidays 13660 yen~ (also various plans) ★Operating period: middle of April - middle of November

**Skyland Shiratori Kogen Country Club**

This ski resort is located at an altitude of 1200m and is completely changed to a rich natural golf course in the summer. The 2nd and 3rd floors of the club house are used for lodging. Visitor use is also available at reasonable prices.



☎ 0575-86-3111 📍 Hinokitoge Shitoricho Itoshiro, Gujo City 🗓️None during the season ☑️Visitors: 1 round play Weekdays 4950 yen~, Weekends/Holidays 8950 yen~ ★Operating period: end of April - beginning of November

**Daily Gujo Country Club**

The large panoramic view of the Hakusan mountain range is picturesque. There are 3 courses: a fairly flat lake course, a moderate up/down river course, and a mountain course with beautiful white birch trees.



☎ 0575-73-2121 📍 2363 Takasucho Washimi Ueno, Gujo City 🗓️None during the season ☑️Visitors: Weekdays 7700 yen~, Weekends/Holidays 10700 yen~ ★Operating period: middle of April - middle of November



Full of satisfying slopes★

# Beginners or experts, couples or families Gujo City has the Tokai Region's premier ski resorts!

Wide and gentle slopes geared to families and beginners.

## Hirugano Kogen Ski Resort

A simple layout of 8 runs in one vast course. Because it's wide and a straight line to the bottom, beginners will feel at ease and enjoy. From time to time, snow activities such as snow rafting are held!

☎0575-73-2311 ☎4670-75 Takasuchō Hirugano, Gujo City, Gifu Prefecture ☎8:00-16:30 ☎None during the season ⚡5 minutes from the Tokai-Hokuriku Expressway Hirugano Kogen Smart IC ☎600 spaces (1 day/1000 yen)

**[Lift Tickets]**

- 1 Day Ticket / Adult 4000 yen, Child 2600 yen
- Family Ticket / (1 Adult + 1 Child) 5200 yen

**[Rentals]**

- Snowboard set: 1 day / Adult 4000 yen, Child 3000 yen
- Ski set: 1 day / Adult 3000 yen, Child 2000 yen
- Wear: 1 day / Adult 3000 yen, Child 2000 yen
- ※ Small accessories such as goggles and gloves are available for rent



Ski Resort Open Period  
middle of December  
↓  
end of March



Kids events are held every weekend at the Kids Park.



▲ Snow Rafting (500 yen)



▲ Popular stone oven pizza that surpasses the traditional Gueret food.

▶ 3 year olds to seniors can participate in the school.



▲ The hotel's large hot spring bath. (Details on page 7)



▲ Gujo Kogen Hotel is near the slopes. (Details on page 7)

Ski Resort Open Period  
middle of December  
↓  
middle of March



The fresh air in Gujo Kogen is refreshing.

Enjoy the sense of privacy. Slopes geared toward beginners.

## Gujo Kogen Ski Resort

Spread out in front of the Gujo Kogen Hotel, the slopes have a maximum incline of 18 degrees and are fairly gradual. The runs are less crowded and only two run between trees, which makes them perfect places for beginners and children making their mountain debuts!

☎0575-73-2206 ☎2363-395 Takasuchō Washimi, Gujo City, Gifu Prefecture ☎8:30-16:00 ☎None during the season ⚡5 minutes from the Tokai-Hokuriku Expressway Hirugano Kogen Smart IC ☎80 spaces (Free)

**[Lift Tickets]**

- 1 Day Ticket / Adult 3500 yen, Child 3000 yen

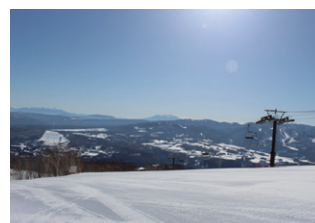
**[Rentals]**

- Snowboard set / Adult 4500 yen
- Ski set / Adult 3500 yen, Child 2500 yen
- ※ Accessory rentals including goggles and gloves are also available

Ski Resort Open Period  
end of December  
↓  
middle of April



A variety of items, including one of Japan's best super pipes.



**[Lift Tickets]**

- ※ Takasu Snow Park/Dynalnd combination
- 1 Day Ticket / Adult 4900 yen, Child 2000 yen
- Afternoon Ticket (12:00-16:30) / Adult 3600 yen
- Family 1 Day Ticket (1 Adult + 1 Child) / 5500 yen

**[Rentals]**

- Snowboard set/Ski set: 1 day / Adult 4600 yen, Child 3600 yen
- Board/Skis: 1 day / Adult 3100 yen, Child 2100 yen
- Wear: 1 day / Adult 4100 yen, Child 3100 yen
- ※ Accessory rentals such as goggles and gloves are not available



▲ Connected to "Dynalnd" via the summit so round-trip is possible.

▲ Ride up to the summit on the amazing 15-person gondola!

Enjoy all 12 runs in the best powder snow!

## Takasu Snow Park

There are 12 runs in the big ski slope, including 3 long runs of 4000m from the summit. Items just for snowboarders, such as the half-pipe used in official games, are also available. An exhilarating panoramic view from the 1550m summit!

☎0575-72-7000  
☎3086-1 Takasuchō Nishibora, Gujo City, Gifu Prefecture ☎8:00-16:30, Weekends/Holidays: 7:30-16:30  
☎None during the season ⚡10 minutes from the Tokai-Hokuriku Expressway Takasu IC ☎3000 spaces (1 day/1000 yen)

Up to 18 hours x 20 runs! Play on a large scale.

## Dynalnd

From beginner runs to top-rate courses used for competitions and official certifications, unique gimmick-packed expert courses are all available. Complete with everything for snowboarders and even a DJ booth that takes requests!

☎0575-72-6636 ☎3035-2 Takasuchō Nishibora, Gujo City, Gifu Prefecture ☎8:00-16:30, Weekends/Holidays: 5:00-16:30  
※ Nighter hours (until middle of March) 18:00-23:00  
☎None during the season ⚡10 minutes from the Tokai-Hokuriku Expressway Takasu IC ☎2000 spaces (1 day/1000 yen)

**[Lift Tickets]**

- 1 Day Ticket / Adult 4500 yen, Child 2000 yen
- Night Ticket (18:00-23:00) / Adult 2500 yen, Child 1000 yen
- Late Nighter Ticket (21:00-23:00) / Adult 1000 yen, Child 500 yen
- ※ For Takasu Snow Park/Dynalnd combination lift tickets, please refer to Takasu Snow Park

**[Rentals]**

- Snowboard set/Ski set: 1 day / Adult 4600 yen, Child 3600 yen
- Snowboard/Skis: 1 day / Adult 3100 yen, Child 2100 yen
- Wear: 1 day / Adult 4100 yen, Child 3100 yen
- ※ Accessory rentals such as goggles and gloves are not available

▲ 300000 lights are illuminated during the night.

▶ Connected to the "Takasu Snow Park" at the summit!



Open everyday until 23:00 through the middle of March

Ski Resort Open Period  
beginning of December  
↓  
beginning of April

360-degree panoramic view from the 1600m altitude summit!

## Meiho Ski Resort

This resort, with 4 slopes and 12 runs, boasts Western Japan's longest run of 5000m, as well as a huge kids park. Snack and sweets booths and a restaurant with a special menu are also available!

☎0575-87-2811 ☎3447-1 Mizore, Meiho Okuzumi Gujo City, Gifu Prefecture ☎8:00-16:30, Weekends/Holidays 7:30-16:30  
☎None during the season ⚡30 minutes from the Tokai-Hokuriku Expressway Gujo Hachiman IC ☎4000 spaces (1 day/1000 yen)



▲ A kids park and indoor kids room are available.

▶ Look at the snow-covered forest as you make your way to the summit!

Ski Resort Open Period  
middle of December  
↓  
beginning of April



▲ Vast array of slopes for beginners to experts.

**[Lift Tickets]**

- 1 Day Ticket / Adult 4500 yen, Child 2500 yen

**[Rentals]**

- Snowboard set/Ski set: 1 day / Adult 4500 yen, Child 3500 yen
- Snowboard/Skis: 1 day / Adult 3000 yen, Child 2500 yen
- Wear: 1 day / Adult 4000 yen, Child 3000 yen
- ※ Accessory rentals such as goggles and gloves are not available

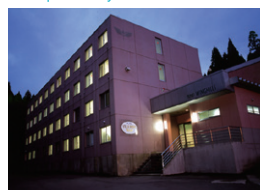
Experts will also be satisfied with the high specifications. Look for special campaigns!

## Winghills Shirotori Resort

The half pipe and trapezoid box, items commonly used by the pros, are available at the "3S Park." Look for the special campaign that gives you a free lift ticket after you come 3 times!

☎0575-86-3518 ☎1-1 Shirotoricho Itoshiro Tokeyama, Gujo City, Gifu Prefecture ☎8:00-16:30  
※ Weekends/Holidays until middle of March from 5:00  
☎None during the season ⚡30 minutes from the Tokai-Hokuriku Expressway Shirotori IC/Takasu IC ☎1800 spaces (1 day/1000 yen) ※ Weekdays free

▶ Affiliated "Hotel Villa Wing" (details on page 4)



Ski Resort Open Period  
middle of November  
↓  
middle of April



▲ In addition to 9 runs, there is an International Ski Federation mogul course.

**[Lift Tickets]**

- 1 Day Ticket / Adult 4700 yen, Junior/High school student 2600 yen, Elementary student 1000 yen
- 6-hour Ticket / Adult 4000 yen
- Afternoon Ticket (12:00-) / Adult 3100 yen
- ※ Weekend/Holiday early morning use +300 yen

**[Rentals]**

- Snowboard set / Ski set: 1 day / Adult 4200 yen, Child 2500 yen
- Snowboard/skis: 1 day / Adult 3100 yen, Child 2000 yen
- Wear: 1 day / Adult 3100 yen, Child 2500 yen
- ※ Accessory rentals such as goggles and gloves are not available

▼ Ride to the summit in 8 minutes in the 6-person gondola.



At-home atmosphere perfect for a snow mountain debut.

## Motai Onsen Ski Resort

The campground and ski resort run year-round. The slope is simple and has only 1 run. The outstanding view and gentle slope, as well as the slope just for sledding, make this a perfect place for families to spend a relaxing time.

☎0575-88-4063 ☎1728 Yamatocho Kurisu, Gujo City, Gifu Prefecture ☎8:00-16:30  
☎Monday-Friday (Weekdays are only open to groups) ※ Reservations required ⚡25 minutes from the Tokai-Hokuriku Expressway Gifu Yamato IC ☎300 spaces (1 day/1000 yen)



**[Lift Tickets]**

- Weekends/Holidays: 1 Day Ticket/Adult 2500 yen, Child 2000 yen
- Book of 10 lift tickets: 2000 yen

**[Rentals]**

- Snowboard set: 1 day/Adult 4000 yen, Child 3000 yen
- Ski set: 1 day / Adult 3000 yen, Child 2000 yen
- Wear: 1 day / Adult 3000 yen, Child 2000 yen
- ※ A few accessories, such as goggles and gloves are available for rent

▲ Warm up in the Motai Hot Spring (details on page 8) after playing.



▲ Ski down the main slope to the front of the Center House.



**Weekdays all-you-can-ski for 2000 yen!**  
**Reasonable rates and calm atmosphere.**

Ski Resort Open Period  
 end of December  
 ↓  
 beginning of March

**Early morning operations from 4:00am!**

Open on weekends and holidays from 4:00am, even before the sun appears. Zoom down the uncrowded slopes!

### Shirao Ski Resort

Although smaller than other ski resorts within Gujo City, it makes up for the size with its reasonable lift ticket rates. The plaza has a free resting area and, because operation begins at 12:00am, it's okay to take a nap.

☎0575-84-1111 📍1410-18 Shirotoricho Rokunori, Gujo City, Gifu Prefecture 🕒8:00-16:20 (Weekends/Holidays from 4:00-) 🗺️During bad weather 🕒10 minutes from the Tokai-Hokuriku Expressway Shiratori IC 🏠1000 spaces (1 day/1000 yen※Weekdays free) 🌐http://www.shirao.co.jp

#### [Lift Tickets]

- Weekday 1 Day Ticket / Adult 2000 yen, Child 1000 yen
- Weekend/Holiday 1 Day Ticket / Adult 3500 yen, Child 1500 yen
- Early Morning Ticket (4:00-9:00) / Adult 2500 yen, Child 1000 yen

#### [Rentals]

- Snowboard set/Ski set: 1 day / Adult 4500 yen, Child 3500 yen
  - Board/Skis: 1 day / Adult 3500 yen, Child 2500 yen
  - Wear: 1 day / Adult 3500 yen, Child 2500 yen
- ※Small accessories such as goggles and gloves are available for rent



**Kids love the Chibikko Slope.**

There's also a special slope just for small children to play in and use for sledding without having to worry.

Snowboarders call this an "interesting ski resort."



In addition to the catch phrase, "Close! Cheap! Fun!" is the established position that "everyone can easily enjoy this ski resort." In addition to a 3000m-downhill course with an altitude difference of 510m that you can ski down all at once there is also a 38-degree pendulum-type course and a 600m snowboard park and cross course. The rich course layout was built to take advantage of the nature and is one of the resort's charms. The resort is located 8 kilometers from the Tokai-Hokuriku Expressway Shiratori Interchange and easily accessible. You can also take a free shuttle bus from the Nagaragawa Railway Mino Shiratori Station on weekends and holidays.

## Shirao Gelande

**The layout takes advantage of the natural terrain.**

Skiing while looking out at the Hakusan mountain range is exhilarating! Your jaw will drop at the amazing scenery.

The great scenery is another one of the ski resort's charms!



## Snow Wave Park SHIRATORI KOGEN

Winter  
 Enjoy the ski resort in Gujo

**Stay warm in the covered quad lift.**

The quad lift quickly carries you to the summit. Even on snowy days, the covered lift makes it care-free.

**Directly connected to the Shiratori Kogen Hotel.**  
**Dynamic skiing on the boast-worthy high quality snow slopes!**

The 1276m altitude north slopes that spread out have one of the best snow qualities and reputations in Okumino. Because of the rich and undulating terrain, the course itself is wavy and almost like a park. Each course is unregulated, which means there are infinite routes and ideas on how to ski them. The park items match a variety of needs from beginners to experts. The slope in front of the Shiratori Kogen Hotel is gentle, so ski and snowboard beginners and families with small children can enjoy without having to worry!

**Glide freely on the dynamic terrain.**

Ski freely on the wide paths that spread out like a fan from the summit down the slopes. Customize your favorite course.

Ski Resort Open Period  
 November  
 ↓  
 beginning of April

### Snow Wave Park Shiratori Kogen

As the name "Snow Wave" implies, the slope features many ups and downs. The lookout from the 1200m mountain slope is also amazing. There are also park items such as kickers and rails.

#### [Lift Tickets]

- 1 Day Ticket / Adult 4000 yen, Child 2000 yen

#### [Rentals]

- Snowboard set: 1 day / Adult 5000 yen, Child 3500 yen
- Ski set: 1 day / Adult 4000 yen, Child 3500 yen
- Board: 1 day / 3500 yen
- Skis: 1 day / 2500 yen
- Wear: 1 day / Adult 3500 yen, Child 3000 yen

※Accessory rentals such as goggles and gloves are not available

☎0575-86-3111 📍Hinokitouge, Shirotoricho Itoshiro, Gujo City, Gifu Prefecture 🕒8:00-16:30 🗺️None during the season 🕒25 minutes from the Tokai-Hokuriku Expressway Shiratori IC 🏠1000 spaces (1 day/1000 yen ※Weekdays free) 🌐http://www.siratori-k.jp/swp

**Rinkan Course use is OK!**

If the weather and snow condition are good, try the rinkan course. You won't see many other skiers or snowboarders on this highly-rated quiet course.



#### Hotel

Affiliated Hotel

#### Shiratori Kogen Hotel

The Kogen Hotel overlooks famous peaks, including the Hakusan mountain range and Yariyatake. Both Japanese and Western-style rooms are available, as well as a large indoor bath. Because it's directly connected to the slopes, it's easy to access.



☎0575-86-3611 📍Hinokitouge, Shirotoricho Itoshiro, Gujo City, Gifu Prefecture 🕒1 night/2 meals, 2 people/1 room (tax included): Adult 8200 yen~



**Exceptional snow quality!  
Enjoy the panoramic scenery and  
exhilarating skiing from the summit!**

## White Pia Takasu



Because of its location on the north slope of Washigatake, the snow is stable and good quality. In addition to the 13 courses that take advantage of the terrain that extends from the mountain ridge, the slopes also have a mogul course, freestyle park, fresh powder course, and kids park that meet a wide variety of needs. The resort's special "Difficult course" is hard to tackle even for experts! Once you reach the summit, look down at the vast superb view spread out beneath you and pause to take a breath. Then take a long cruise down the 2600m panorama way. The exhilarating feeling that makes you almost want to scream must be tried at least once.

Ski Resort  
Open Period  
middle of  
November  
↓  
end of  
March

### 2600m Panorama Way!

From the most popular course, you can ski while looking out at Mt. Dainichi and the Hakusan mountain range from the summit. Because you descend along a gentle ridge, it's recommended for beginners.

## White Pia Takasu

Facility with easily usable large bath and rest area. Weekday visitors receive 1 ticket per car, as well as a 1 day lift ticket for the next time. ※ May change depending on the season

☎0575-72-6311 ♡512 Takasuchō Washimi, Gujo City, Gifu Prefecture ☉8:00-16:30 ※Weekends and holidays until the beginning of March (sunrise & sunset operation days) 5:00-18:00 ☘None during the season ⚡8 minutes from the Tokai-Hokuriku Expressway Hirugano Kogen Smart IC Ⓞ2000spaces (1 day / 1000yen) Ⓞhttp://www.whitepia.jp

### [Lift Tickets]

- 1 Day Ticket / Adult 4100 yen, Child 2000 yen
- All Day Ticket (Sunrise & Sunset operating days) / Adult 4300 yen, Child 2000 yen

### [Rentals]

- Snowboard set / Ski set: 1 day / Adult 4500 yen, Child 3500 yen
- Wear Set: 1 day / Adult 3500 yen, Child 3000 yen
- ※ Small accessories such as goggles and gloves are available for rent

## Yunohira Onsen

A one building hot spring built to shoulder the mountain. Separate men's and women's indoor baths, outdoor open-air bath, and a whirlpool spa are available. There are also after-bath treatments to help you relax. The colorless, transparent water is thick and has a favorable reputation among hot spring enthusiasts.

☎0575-72-6455 ♡1792 Takasuchō Owashi, Gujo City, Gifu Prefecture ☉10:00-21:30 (last entrance 21:00) ☘Thursdays (open on holidays) ※Thursdays in January-March are not holidays ♫ Adult (Junior high student and older) 600 yen, Elementary student 300 yen ⚡5 minutes from the Tokai-Hokuriku Expressway Takasu IC Ⓞ50 spaces

### Affiliated Hot Spring



Spa

## Big snow resort where you can navigate 2 ski resorts.

### "Washito Pia" begins

From last season, "Washigatake Ski Resort" and "White Pia Takasu" began selling a combination lift ticket, "Washito Pia." Because the 2 slopes are on the same Washigatake ridge, enjoy coming and going between the two and skiing all 26 courses!

### [Combination Lift Tickets]

- 1 Day Ticket / Adult 4900 yen, Child 2500 yen
- 5-hour Ticket (5 hours after passing through gate) / Adult 4100 yen, Child 2300 yen
- Kids Ticket (3 years~Preschool) / Each: 1000 yen

News!



**Great access and 3km  
from the Takasu Interchange.  
Beginners and experts love  
the exhilarating wide pathways.**

## Washigatake Gelande



### 13 Course Layout.

Centered around the 400m wide slope, there is a good balance of beginner, intermediate and advanced courses!

### Produced by park designer.

Look at the new concept park, "THE ACTIVE," by park designer Mr. Shinya Mizobata. The wacky and provocative items make even experts dizzy!

▼ Only on Saturday nights, the laser boom box hypes up the spirit at the park!

▲ The park area has more than 20 items scattered around. Because the slope is gentle, you'll feel a sense of security even as you improve your skills.

Winter  
Enjoy the ski resort in Gujo

Because there are many slopes with medium inclines, you can enjoy comfortable skiing no matter what level you are at, from beginner to expert. There are more than 20 popular items, including kicker and table top, in the park area where free riders compete and show their skills. In addition, Saturdays are open all-night and allow for you to adjust your schedule. The sledding course and kids park with snow slide is free for children 2 and under! (Children 3 and over are 600 yen.) The family follow-up system is also excellent.

Ski Resort  
Open Period  
November  
↓  
beginning of  
April

## Washigatake Ski Resort

The resort boasts wide open slopes with full views. Within the resort, there are 4 restaurants that focus on food, local foods, energy-providing menus and a variety of sweets by a pastry chef!

☎0575-72-5105 ♡3250 Takasuchō Owashi, Gujo City, Gifu Prefecture ☉8:00-16:30 ※Fridays until the middle of March are until 22:30, Saturdays are open all night (Check details on the website) ☘None during the season ⚡3 minutes from the Tokai-Hokuriku Expressway Takasu IC Ⓞ3000 spaces (1 day/1000 yen) Ⓞhttp://ski.washigatake.jp

### [Lift Tickets]

- 1 Day Ticket / Adult 4300 yen, Child 2000 yen
- Night Ticket (16:00-22:30) / Adult 2500 yen, Child 1000 yen

### [Rentals]

- Snowboard set / Ski set: 1 day / Adult 4600 yen, Child 3600 yen
- Snowboard/Skis: 1 day / Adult 3100 yen, Child 2100 yen
- Wear: 1 day / Adult 4100 yen, Child 3100 yen
- ※ Small accessories such as goggles and gloves are available for rent



### Exceptional spring quality hot spring!

Located on the 1st floor of the Center House, the "Washigatake Onsen" is a full-fledged hot spring facility with an open-air outdoor bath, sauna and Jacuzzi. Warm your cold body here.  
● Bath fee: Adult 850 yen, Child 550 yen (12:00-20:00 ※all-night is late night operations from 12:00am)

Directly-managed  
hotel } Hotel

## Washigatake Kogen Hotel Rainbow

The buffet in the hotel directly connected to the slope has 60 types of Japanese, Western and Chinese foods for dinner. There are many accommodation plans with special offers worth checking out, including a 1 day lift ticket, Washigatake Onsen bath discount ticket, rental coupon and free parking!

☎0575-72-5102 ♡3250 Takasuchō Owashi, Gujo City, Gifu Prefecture ♫ 1 night/2meals, 2 people/1 room (tax included): Adult 15600 yen~

